

Hastings St between Wilkinson Rd and Santa Anita Ave

November 23, 2020 To November 27, 2020



The data presented here is for information purposes only and should not be considered authoritative for construction, geotechnical, engineering, navigational, legal, or other site-specific uses. The information shared is owned by the Transportation Division of the Engineering Department at the District of Saanich. Accuracy is not guaranteed.

Start Date: 23-Nov-20
 Start Time: 21:02
 Station ID: R0495-01

Location 1: Hastings St between Wilkinson Rd and Santa Anita Ave

Note:

DATE:	November 23, 2020		November 24, 2020		November 25, 2020		November 26, 2020		November 27, 2020		WK AVG		WK AVG	HOURLY
	MON		TUE		WED		THURS		FRI		EB	WB	CH 1+2	%
Time:	EB	WB	EB	WB	EB	WB	EB	WB	EB	WB	EB	WB		
12-1 AM			3	3	6	6	3	5			4	5	9	0.3%
1-2 AM			3	3	2	3	4	1			3	2	5	0.2%
2-3 AM			3	0	3	0	3	0			3	0	3	0.1%
3-4 AM			1	2	1	1	1	2			1	2	3	0.1%
4-5 AM			2	0	4	1	0	0			2	0	2	0.1%
5-6 AM			13	7	12	6	15	1			13	5	18	0.5%
6-7 AM			88	12	81	12	89	10			86	11	97	2.9%
7-8 AM			212	55	188	59	183	55			194	56	251	7.5%
8-9 AM			278	164	264	142	260	130			267	145	413	12.4%
9-10 AM			112	70	104	59	96	67			104	65	169	5.1%
10-11 AM			81	52	110	71	108	84			100	69	169	5.1%
11-12 PM			89	90	85	88	84	79			86	86	172	5.1%
12-1 PM			101	89	116	105	108	103			108	99	207	6.2%
1-2 PM			102	88	121	104	102	70			108	87	196	5.9%
2-3 PM			161	172	155	165	144	161			153	166	319	9.6%
3-4 PM			151	172	156	196	160	176			156	181	337	10.1%
4-5 PM			133	216	151	204	135	242			140	221	360	10.8%
5-6 PM			76	123	105	163	109	149			97	145	242	7.2%
6-7 PM			68	64	57	70	58	83			61	72	133	4.0%
7-8 PM			34	45	40	53	48	50			41	49	90	2.7%
8-9 PM			21	29	30	31	26	48			26	36	62	1.8%
9-10 PM	11	25	17	19	22	31	14	32			16	27	43	1.3%
10-11 PM	8	12	10	23	10	9	12	19			10	16	26	0.8%
11-12 AM	6	9	5	4	4	9	6	10			5	8	13	0.4%
LANES			1764	1502	1827	1588	1768	1577			1784	1554	3338	100.0%
TOTAL			3266		3415		3345				3340			
	MON		TUE		WED		THURS		FRI		WK AVG			

PEAK HOUR					TOTAL VEHICALS-PEAK PERIODS		2 HOUR PEAK INTERVALS				
MAX. 7 - 9 am PEAK HOUR	413	⇒	12.4%	between 8-9 AM	1644	⇒	6 HR TOTAL	2 HR AM (7 - 9 AM)			
MAX. 7 - 11 am PEAK HOUR	413	⇒	12.4%	between 8-9 AM	1265	⇒	4 HR TOTAL	VEH / HR	VEH / 2HR	2 HR %	
MAX. 11 am - 1 pm PEAK HOUR	207	⇒	6.2%	between 12-1 PM				7-8 AM	251	663	19.9%
MAX. 11 am - 3 pm PEAK HOUR	319	⇒	9.6%	between 2-3 PM				8-9 AM	413		
MAX. 4 - 6 pm PEAK HOUR	360	⇒	10.8%	between 4-5 PM				2 HR NOON (11 - 1 PM)			
MAX. 3 - 6 pm PEAK HOUR	360	⇒	10.8%	between 4-5 PM				VEH / HR	VEH / 2HR	2 HR %	
								11-12 PM	172	379	11.4%
								12-1 PM	207		
								2 HR PM (4 - 6 PM)			
								VEH / HR	VEH / 2HR	2 HR %	
								4-5 PM	360	602	18.0%
								5-6 PM	242		

Hastings St between Wilkinson Rd and Santa Anita Ave

Westbound

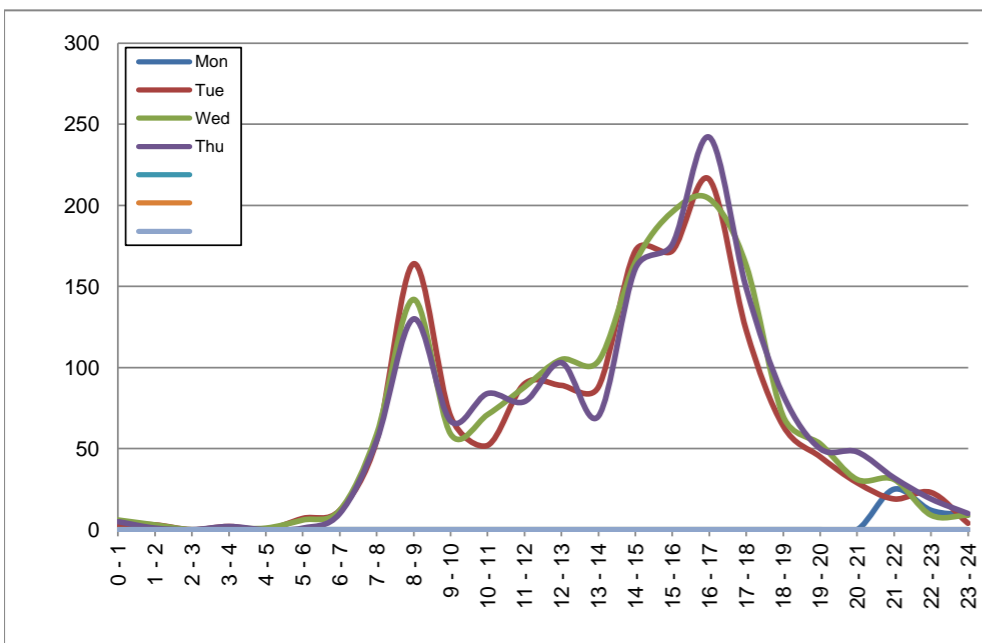
November 23, 2020 to November 26, 2020

Hourly Volumes

Time Period	Mon	Tue	Wed	Thu			
	Nov 23	Nov 24	Nov 25	Nov 26			
0 - 1		3	6	5			
1 - 2		3	3	1			
2 - 3		0	0	0			
3 - 4		2	1	2			
4 - 5		0	1	0			
5 - 6		7	6	1			
6 - 7		12	12	10			
7 - 8		55	59	55			
8 - 9		164	142	130			
9 - 10		70	59	67			
10 - 11		52	71	84			
11 - 12		90	88	79			
12 - 13		89	105	103			
13 - 14		88	104	70			
14 - 15		172	165	161			
15 - 16		172	196	176			
16 - 17		216	204	242			
17 - 18		123	163	149			
18 - 19		64	70	83			
19 - 20		45	53	50			
20 - 21		29	31	48			
21 - 22	25	19	31	32			
22 - 23	12	23	9	19			
23 - 24	9	4	9	10			
Day Total		1502	1588	1577			

15-Minute Volumes

Time Start	Mon	Tue	Wed	Thu			
	Nov 23	Nov 24	Nov 25	Nov 26			
0:00		0	1	3			
0:15		0	2	0			
0:30		0	1	1			
0:45		3	2	1			
1:00		2	2	1			
1:15		0	0	0			
1:30		1	1	0			
1:45		0	0	0			
2:00		0	0	0			
2:15		0	0	0			
2:30		0	0	0			
2:45		0	0	0			
3:00		1	0	0			
3:15		1	1	1			
3:30		0	0	0			
3:45		0	0	1			
4:00		0	0	0			
4:15		0	0	0			
4:30		0	1	0			
4:45		0	0	0			
5:00		2	2	1			
5:15		2	0	0			
5:30		3	2	0			
5:45		0	2	0			
6:00		3	1	0			
6:15		1	1	2			
6:30		3	3	1			
6:45		5	7	7			
7:00		6	11	14			
7:15		13	18	8			
7:30		19	9	13			
7:45		17	21	20			
8:00		22	15	19			
8:15		38	43	34			
8:30		78	64	62			
8:45		26	20	15			
9:00		27	16	27			
9:15		17	19	15			
9:30		14	9	13			
9:45		12	15	12			
10:00		16	13	16			
10:15		13	19	25			
10:30		13	18	20			
10:45		10	21	23			
11:00		21	14	13			
11:15		18	19	19			
11:30		11	25	22			
11:45		40	30	25			
12:00			20	25	17		
12:15			19	28	26		
12:30			27	27	29		
12:45			23	25	31		
13:00			22	34	19		
13:15			23	23	19		
13:30			23	19	13		
13:45			20	28	19		
14:00			20	30	22		
14:15			40	34	38		
14:30			68	60	53		
14:45			44	41	48		
15:00			37	53	37		
15:15			42	46	46		
15:30			42	36	49		
15:45			51	61	44		
16:00			52	52	64		
16:15			51	56	62		
16:30			59	43	66		
16:45			54	53	50		
17:00			46	46	46		
17:15			33	48	34		
17:30			28	40	45		
17:45			16	29	24		
18:00			17	21	22		
18:15			21	19	29		
18:30			16	21	17		
18:45			10	9	15		
19:00			14	11	15		
19:15			16	19	18		
19:30			5	9	8		
19:45			10	14	9		
20:00			7	11	17		
20:15			10	6	12		
20:30			8	8	11		
20:45			4	6	8		
21:00	9	10	10	8			
21:15	6	4	12	9			
21:30	6	4	4	8			
21:45	4	1	5	7			
22:00	3	5	3	9			
22:15	5	6	2	1			
22:30	1	6	2	5			
22:45	3	6	2	4			
23:00	4	1	2	4			
23:15	4	3	3	2			
23:30	1	0	0	3			
23:45	0	0	4	1			



Site notes:

Hastings St between Wilkinson Rd and Santa Anita Ave

Eastbound

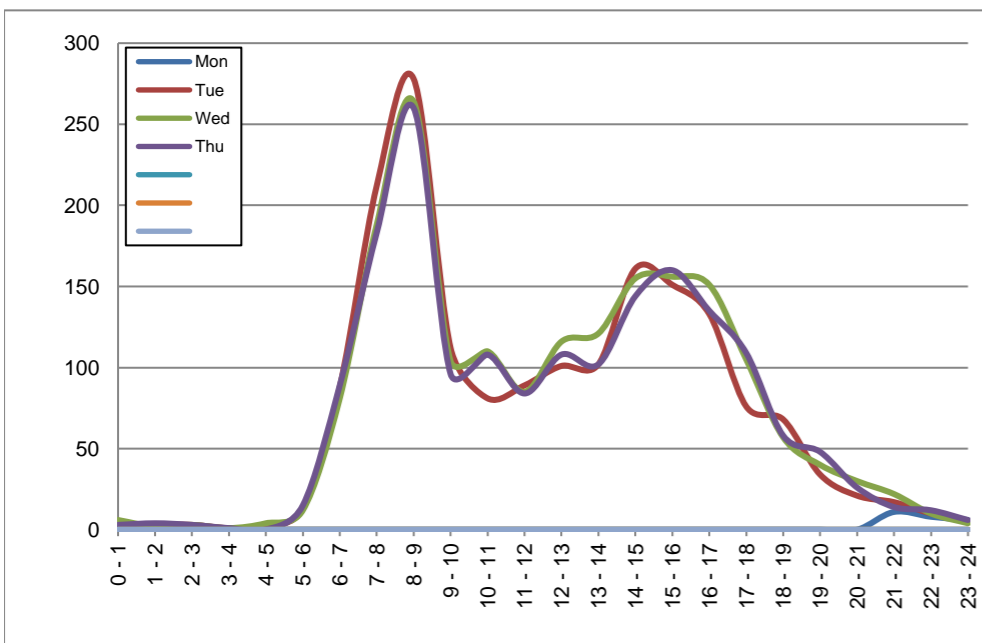
November 23, 2020 to November 26, 2020

Hourly Volumes

Time Period	Mon	Tue	Wed	Thu			
	Nov 23	Nov 24	Nov 25	Nov 26			
0 - 1		3	6	3			
1 - 2		3	2	4			
2 - 3		3	3	3			
3 - 4		1	1	1			
4 - 5		2	4	0			
5 - 6		13	12	15			
6 - 7		88	81	89			
7 - 8		212	188	183			
8 - 9		278	264	260			
9 - 10		112	104	96			
10 - 11		81	110	108			
11 - 12		89	85	84			
12 - 13		101	116	108			
13 - 14		102	121	102			
14 - 15		161	155	144			
15 - 16		151	156	160			
16 - 17		133	151	135			
17 - 18		76	105	109			
18 - 19		68	57	58			
19 - 20		34	40	48			
20 - 21		21	30	26			
21 - 22	11	17	22	14			
22 - 23	8	10	10	12			
23 - 24	6	5	4	6			
Day Total		1764	1827	1768			

15-Minute Volumes

Time Start	Mon	Tue	Wed	Thu				Time Start	Mon	Tue	Wed	Thu			
	Nov 23	Nov 24	Nov 25	Nov 26					Nov 23	Nov 24	Nov 25	Nov 26			
0:00		2	2	1				12:00		28	32	24			
0:15		1	3	1				12:15		21	23	27			
0:30		0	0	1				12:30		22	24	29			
0:45		0	1	0				12:45		30	37	28			
1:00		2	1	3				13:00		35	32	34			
1:15		0	1	0				13:15		21	26	15			
1:30		1	0	0				13:30		21	25	22			
1:45		0	0	1				13:45		25	38	31			
2:00		0	0	0				14:00		26	29	29			
2:15		0	1	1				14:15		32	27	23			
2:30		1	1	1				14:30		24	25	23			
2:45		2	1	1				14:45		79	74	69			
3:00		0	0	0				15:00		41	40	39			
3:15		0	0	0				15:15		36	30	41			
3:30		0	0	0				15:30		37	33	43			
3:45		1	1	1				15:45		37	53	37			
4:00		0	0	0				16:00		43	38	38			
4:15		0	0	0				16:15		27	40	27			
4:30		1	2	0				16:30		34	34	29			
4:45		1	2	0				16:45		29	39	41			
5:00		2	1	2				17:00		20	42	30			
5:15		3	1	1				17:15		22	19	22			
5:30		3	2	3				17:30		15	21	24			
5:45		5	8	9				17:45		19	23	33			
6:00		13	6	10				18:00		22	15	21			
6:15		17	20	17				18:15		10	16	9			
6:30		22	25	28				18:30		18	18	18			
6:45		36	30	34				18:45		18	8	10			
7:00		34	24	27				19:00		11	10	7			
7:15		52	51	48				19:15		10	6	14			
7:30		70	63	61				19:30		9	17	11			
7:45		56	50	47				19:45		4	7	16			
8:00		58	53	67				20:00		7	9	10			
8:15		69	71	66				20:15		6	9	5			
8:30		77	74	66				20:30		4	5	6			
8:45		74	66	61				20:45		4	7	5			
9:00		25	30	32				21:00	2	3	3	1			
9:15		26	26	20				21:15	3	7	6	6			
9:30		33	25	21				21:30	2	0	5	1			
9:45		28	23	23				21:45	4	7	8	6			
10:00		28	29	24				22:00	2	1	4	2			
10:15		19	23	27				22:15	2	8	4	4			
10:30		16	27	28				22:30	2	1	1	5			
10:45		18	31	29				22:45	2	0	1	1			
11:00		19	16	18				23:00	3	0	1	3			
11:15		22	22	18				23:15	2	2	2	1			
11:30		24	21	20				23:30	1	2	0	0			
11:45		24	26	28				23:45	0	1	1	2			



Site notes:

Vehicle Speed Summary

Saanich Engineering Department

Count Id: R0495-01

Filename: Hastings St between Wilkinson Rd and Santa Anita Ave-Nov-2020.xlsm

Location: Hastings St between Wilkinson Rd and Santa Anita Ave

Note:

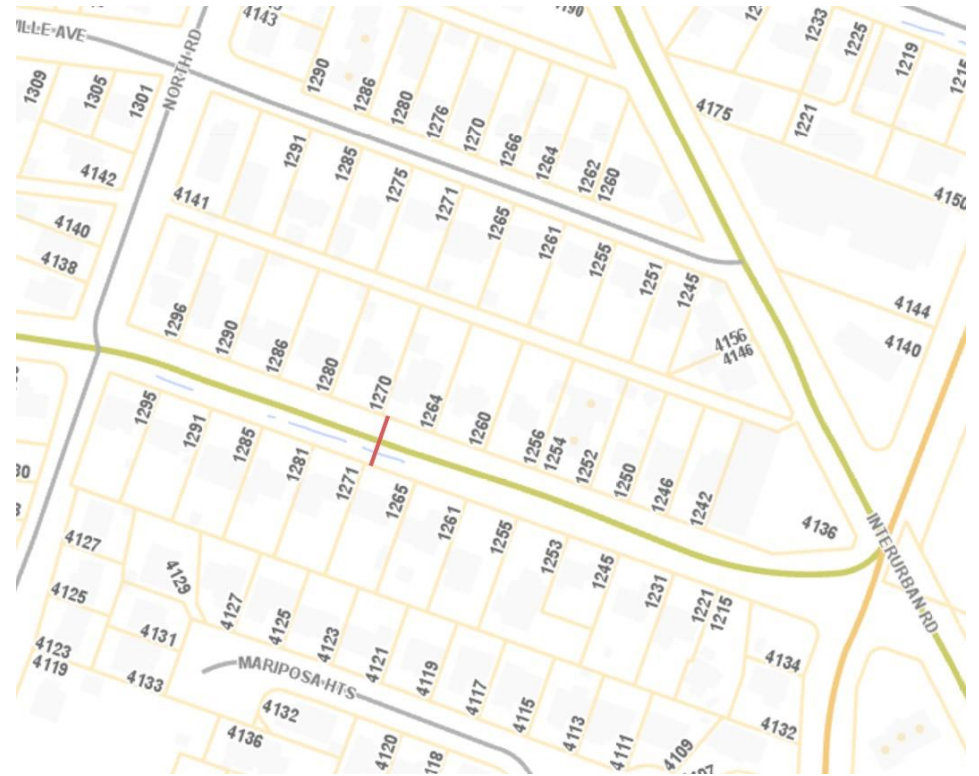
Direction: **East-West**

Dates: **November 23, 2020 To November 27, 2020**

Filtered data

AVG. SPEED	29 mph	46 km/h
50 % SPEED	29 mph	46 km/h
85 % SPEED	33 mph	53 km/h
95 % SPEED	36 mph	57 km/h

Location Map



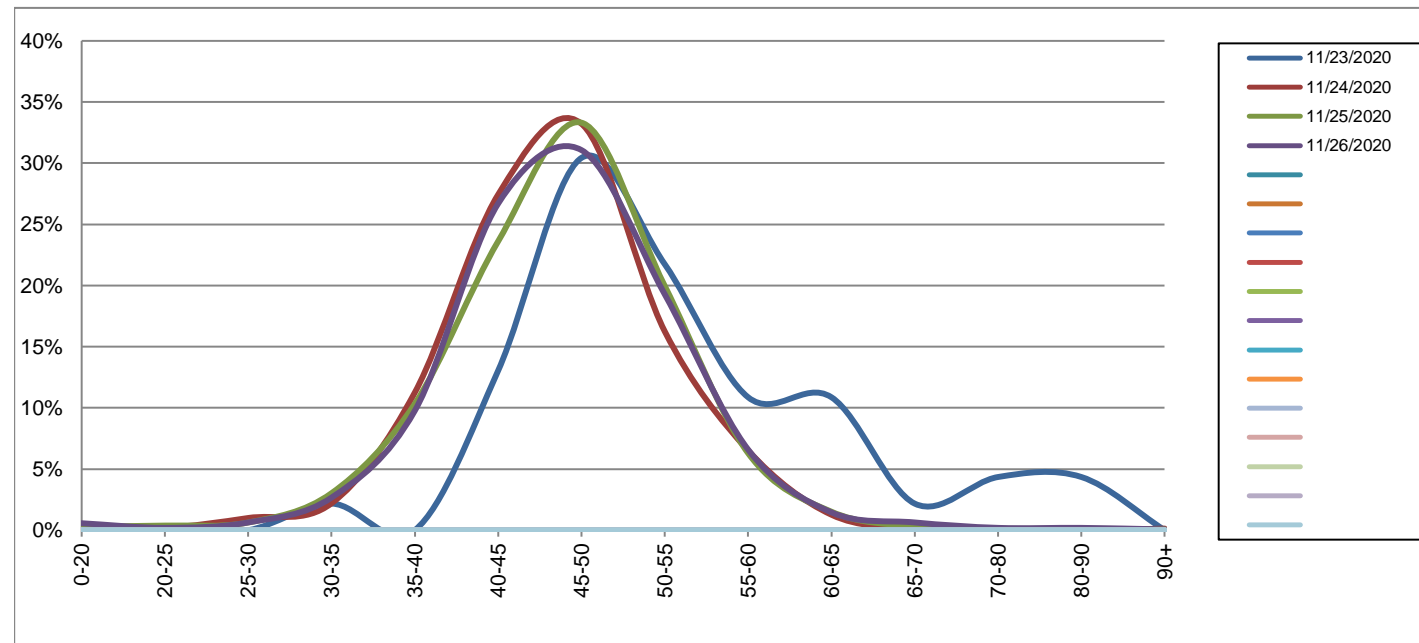
Hastings St between Wilkinson Rd and Santa Anita Ave

Westbound
November 23, 2020 to November 26, 2020

Daily Speed Bin Percentages															Daily Speed Bin Volumes														Total	Avg.
Bin #	1	2	3	4	5	6	7	8	9	10	11	12	13	14	1	2	3	4	5	6	7	8	9	10	11	12	13	14	Volume	Speed
Bin Speeds	0-20	20-25	25-30	30-35	35-40	40-45	45-50	50-55	55-60	60-65	65-70	70-80	80-90	90+	0-20	20-25	25-30	30-35	35-40	40-45	45-50	50-55	55-60	60-65	65-70	70-80	80-90	90+		
11/23/2020	0.0%	0.0%	0.0%	2.2%	0.0%	13.0%	30.4%	21.7%	10.9%	10.9%	2.2%	4.3%	4.3%	0.0%	0	0	0	1	0	6	14	10	5	5	1	2	2	0	46	54
11/24/2020	0.3%	0.2%	1.0%	2.2%	11.3%	27.4%	33.2%	16.2%	6.5%	1.3%	0.1%	0.1%	0.0%	0.1%	5	3	15	33	169	412	499	244	98	19	2	1	0	2	1502	46
11/25/2020	0.3%	0.4%	0.6%	3.0%	10.3%	23.6%	33.3%	20.0%	6.3%	1.5%	0.3%	0.1%	0.1%	0.1%	5	6	10	48	164	375	529	317	100	24	5	2	2	1	1588	47
11/26/2020	0.6%	0.2%	0.6%	2.7%	9.8%	26.7%	31.1%	19.3%	6.6%	1.5%	0.6%	0.2%	0.2%	0.1%	9	3	10	42	154	421	490	304	104	23	10	3	3	1	1577	47
Total	0.4%	0.3%	0.7%	2.6%	10.3%	25.8%	32.5%	18.6%	6.5%	1.5%	0.4%	0.2%	0.1%	0.1%	19	12	35	124	487	1214	1532	875	307	71	18	8	7	4	4713	46

Speed Data Summary

Bin #	1	2	3	4	5	6	7	8	9	10	11	12	13	14	Total
Bin Speeds	0-20	20-25	25-30	30-35	35-40	40-45	45-50	50-55	55-60	60-65	65-70	70-80	80-90	90+	
Survey Total	19	12	35	124	487	1214	1532	875	307	71	18	8	7	4	4713
% Total	0.4%	0.3%	0.7%	2.6%	10.3%	25.8%	32.5%	18.6%	6.5%	1.5%	0.4%	0.2%	0.1%	0.1%	100%
Accumulated %	0.4%	0.7%	1.4%	4.0%	14.4%	40.1%	72.6%	91.2%	97.7%	99.2%	99.6%	99.8%	99.9%	100%	
Inverse Accum. %	99.6%	99.3%	98.6%	96.0%	85.6%	59.9%	27.4%	8.8%	2.3%	0.8%	0.4%	0.2%	0.1%	0.0%	
Average Speed	46 KM/H														



Site notes:

Hastings St between Wilkinson Rd and Santa Anita Ave

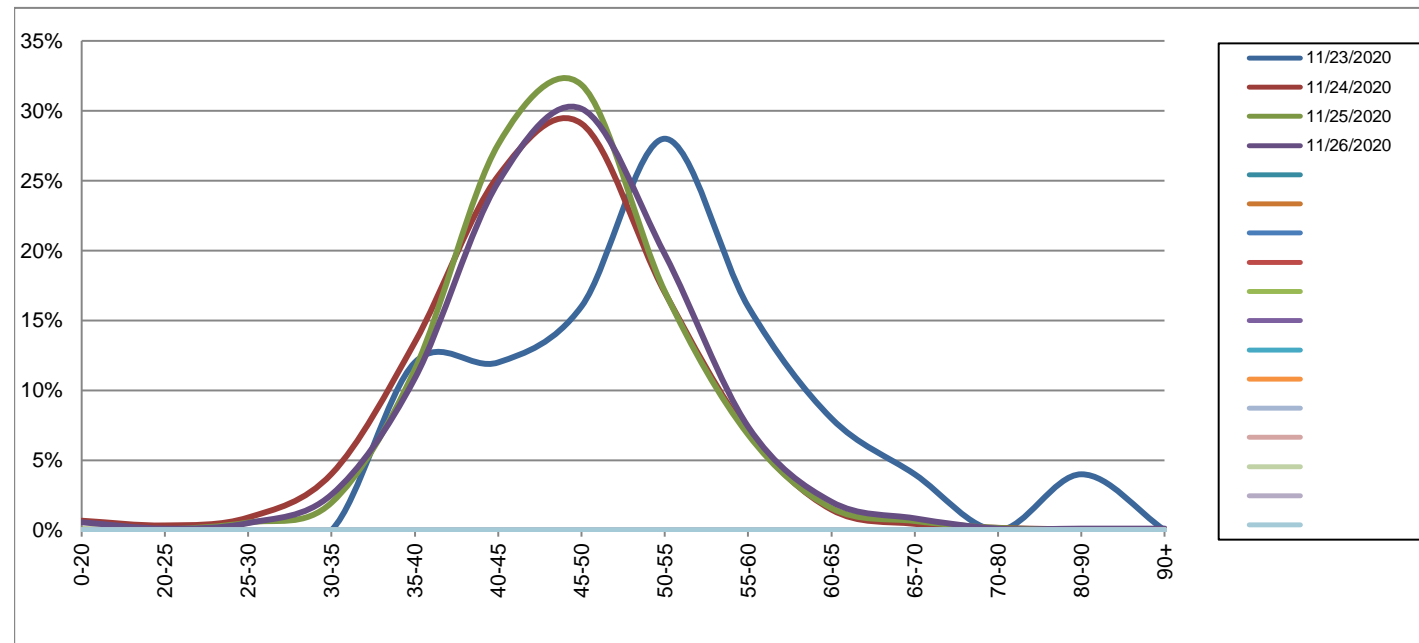
Eastbound

November 23, 2020 to November 26, 2020

Daily Speed Bin Percentages														Daily Speed Bin Volumes														Total	Avg.	
Bin #	1	2	3	4	5	6	7	8	9	10	11	12	13	14	1	2	3	4	5	6	7	8	9	10	11	12	13	14	Volume	Speed
Bin Speeds	0-20	20-25	25-30	30-35	35-40	40-45	45-50	50-55	55-60	60-65	65-70	70-80	80-90	90+	0-20	20-25	25-30	30-35	35-40	40-45	45-50	50-55	55-60	60-65	65-70	70-80	80-90	90+		
11/23/2020	0.0%	0.0%	0.0%	0.0%	12.0%	12.0%	16.0%	28.0%	16.0%	8.0%	4.0%	0.0%	4.0%	0.0%	0	0	0	0	3	3	4	7	4	2	1	0	1	0	25	52
11/24/2020	0.7%	0.3%	0.9%	4.0%	13.4%	25.3%	29.1%	17.0%	7.0%	1.5%	0.5%	0.2%	0.1%	0.1%	12	6	16	71	237	447	513	300	123	26	8	3	1	1	1764	46
11/25/2020	0.1%	0.1%	0.5%	2.0%	11.5%	27.6%	31.9%	17.1%	6.8%	1.6%	0.7%	0.2%	0.1%	0.1%	1	1	10	36	210	504	582	312	125	29	12	3	1	1	1827	47
11/26/2020	0.6%	0.1%	0.5%	2.5%	10.9%	24.9%	30.1%	19.7%	7.4%	2.0%	0.8%	0.1%	0.1%	0.1%	10	2	9	45	192	440	533	349	131	36	15	2	2	2	1768	47
Total	0.4%	0.2%	0.7%	2.8%	11.9%	25.9%	30.3%	18.0%	7.1%	1.7%	0.7%	0.1%	0.1%	0.1%	23	9	35	152	642	1394	1632	968	383	93	36	8	5	4	5384	46

Speed Data Summary

Bin #	1	2	3	4	5	6	7	8	9	10	11	12	13	14	Total
Bin Speeds	0-20	20-25	25-30	30-35	35-40	40-45	45-50	50-55	55-60	60-65	65-70	70-80	80-90	90+	
Survey Total	23	9	35	152	642	1394	1632	968	383	93	36	8	5	4	5384
% Total	0.4%	0.2%	0.7%	2.8%	11.9%	25.9%	30.3%	18.0%	7.1%	1.7%	0.7%	0.1%	0.1%	0.1%	100%
Accumulated %	0.4%	0.6%	1.2%	4.1%	16.0%	41.9%	72.2%	90.2%	97.3%	99.0%	99.7%	99.8%	99.9%	100%	
Inverse Accum. %	99.6%	99.4%	98.8%	95.9%	84.0%	58.1%	27.8%	9.8%	2.7%	1.0%	0.3%	0.2%	0.1%	0.0%	
Average Speed	46 KM/H														



Site notes:

Hastings St between Wilkinson Rd and Santa Anita Ave

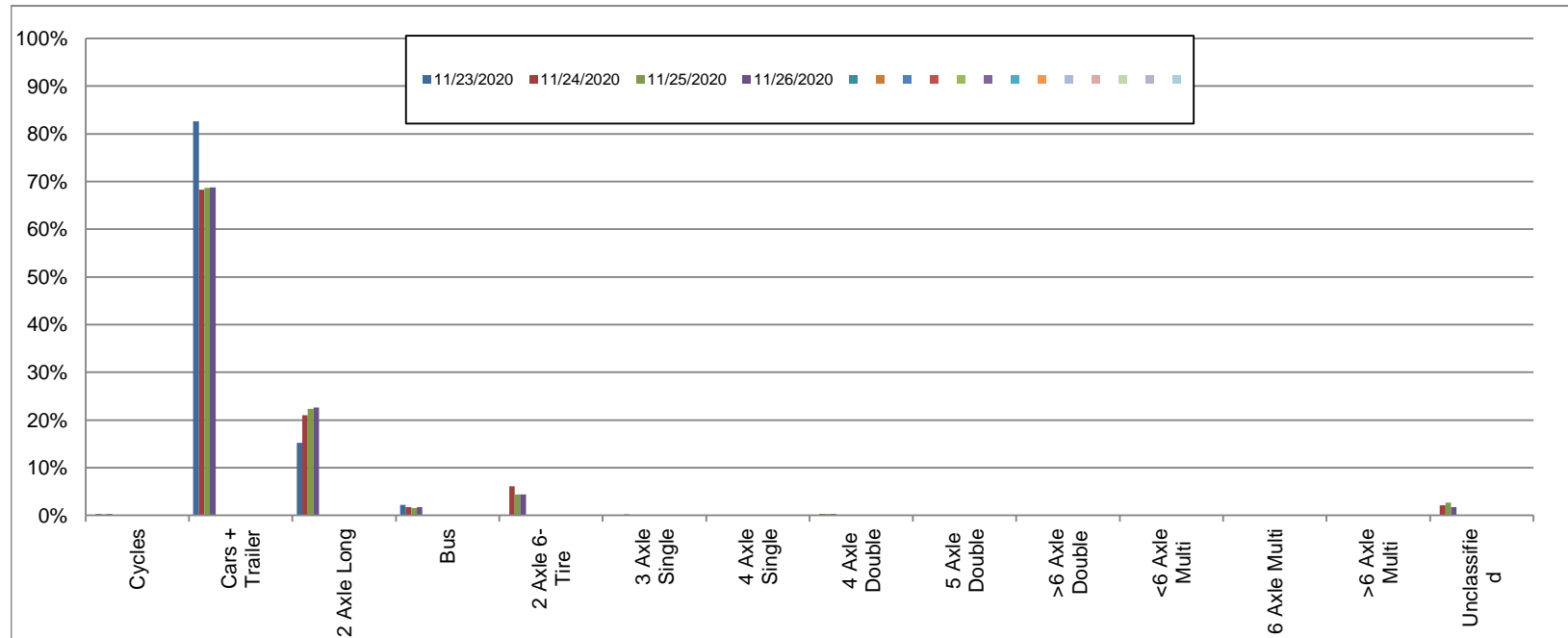
Westbound

November 23, 2020 to November 26, 2020

Daily Class Bin Percentages															Daily Class Bin Volumes															
Bin #	1	2	3	4	5	6	7	8	9	10	11	12	13	14	1	2	3	4	5	6	7	8	9	10	11	12	13	14	Total Volume	
Bin Class	Cycles	Cars + Trailer	2 Axle Long	Bus	2 Axle 6-Tire	3 Axle Single	4 Axle Single	4 Axle Double	5 Axle Double	>6 Axle Double	<6 Axle Multi	6 Axle Multi	>6 Axle Multi	Unclassified	Cycles	Cars + Trailer	2 Axle Long	Bus	2 Axle 6-Tire	3 Axle Single	4 Axle Single	4 Axle Double	5 Axle Double	>6 Axle Double	<6 Axle Multi	6 Axle Multi	>6 Axle Multi	Unclassified	Total Volume	
11/23/2020	0.0%	82.6%	15.2%	2.2%	0.0%	0.0%	0.0%	0.0%	0.0%	0.0%	0.0%	0.0%	0.0%	0.0%	0	38	7	1	0	0	0	0	0	0	0	0	0	0	46	
11/24/2020	0.3%	68.3%	21.0%	1.7%	6.1%	0.1%	0.0%	0.3%	0.1%	0.0%	0.0%	0.0%	0.0%	2.1%	4	1026	316	26	91	2	0	4	1	0	0	0	0	0	32	1502
11/25/2020	0.2%	68.6%	22.3%	1.5%	4.3%	0.0%	0.0%	0.3%	0.0%	0.0%	0.0%	0.0%	0.0%	2.7%	3	1090	354	24	69	0	0	5	0	0	0	0	0	0	43	1588
11/26/2020	0.3%	68.8%	22.6%	1.7%	4.4%	0.2%	0.0%	0.3%	0.0%	0.0%	0.0%	0.0%	0.0%	1.7%	4	1085	357	27	69	3	0	5	0	0	0	0	0	0	27	1577
Total	0.2%	68.7%	21.9%	1.7%	4.9%	0.1%	0.0%	0.3%	0.0%	0.0%	0.0%	0.0%	0.0%	2.2%	11	3239	1034	78	229	5	0	14	1	0	0	0	0	102	4713	

Class Data Summary

Bin #	1	2	3	4	5	6	7	8	9	10	11	12	13	14	Total Volume
Bin Class	Cycles	Cars + Trailer	2 Axle Long	Bus	2 Axle 6-Tire	3 Axle Single	4 Axle Single	4 Axle Double	5 Axle Double	>6 Axle Double	<6 Axle Multi	6 Axle Multi	>6 Axle Multi	Unclassified	Total Volume
Survey Total	11	3239	1034	78	229	5	0	14	1	0	0	0	0	102	4713
% Total	0.2%	68.7%	21.9%	1.7%	4.9%	0.1%	0.0%	0.3%	0.0%	0.0%	0.0%	0.0%	0.0%	2.2%	100%
Accumulated %	0.2%	69.0%	90.9%	92.6%	97.4%	97.5%	97.5%	97.8%	97.8%	97.8%	97.8%	97.8%	97.8%	100.0%	
Inv. Accum. %	99.8%	31.0%	9.1%	7.4%	2.6%	2.5%	2.5%	2.2%	2.2%	2.2%	2.2%	2.2%	2.2%	0.0%	



Classification Descriptions

Bin #	Bin Description
1	Motorcycles
2	Passenger cars, including those with recreational trailers
3	2-axle pick-ups, vans, and RVs, including those with recreational trailers
4	Buses
5	2-axle, 6-tire single units
6	3-axle single units
7	4-axle single units
8	3-axle or 4-axle double unit
9	5-axle double unit
10	6-, 7-, or 8-axle double unit
11	5-axle multiple unit
12	6-axle multiple unit
13	7-or-more-axle multiple unit
14	Vehicles that could not be classified

Site notes:

Hastings St between Wilkinson Rd and Santa Anita Ave

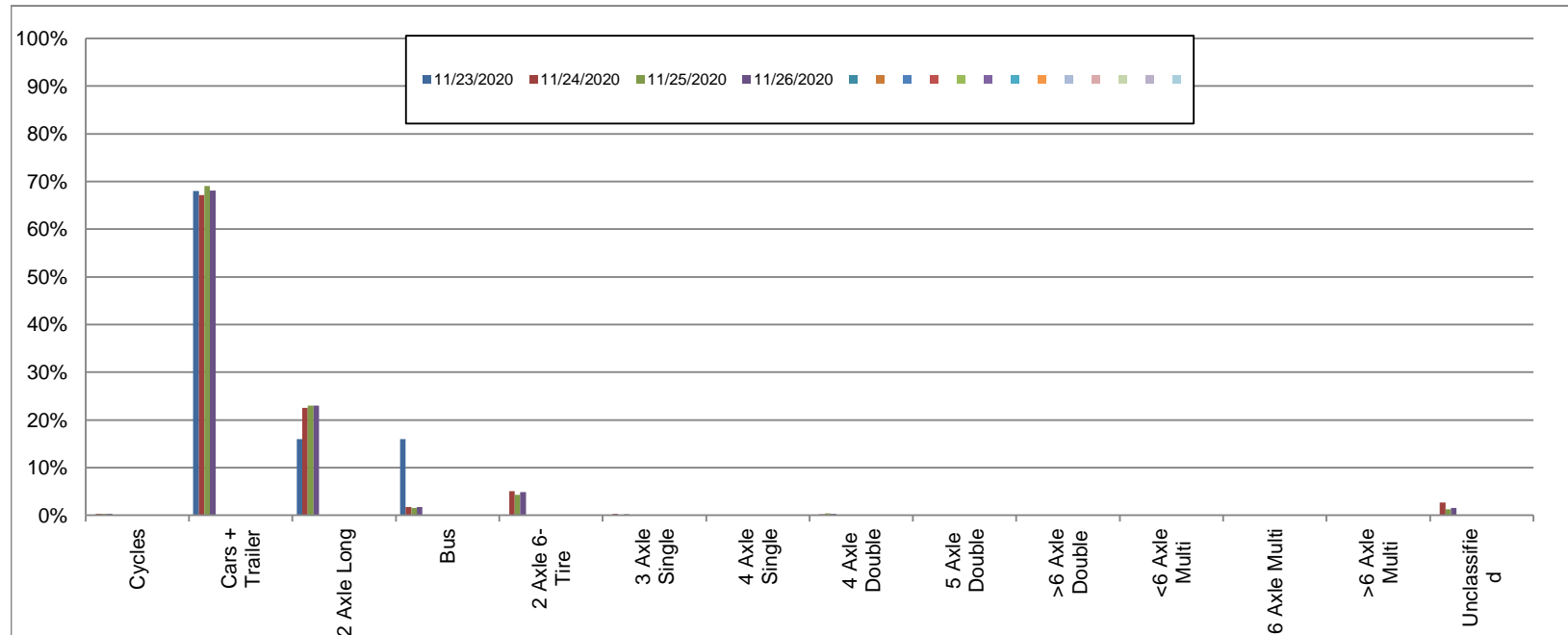
Eastbound

November 23, 2020 to November 26, 2020

Daily Class Bin Percentages															Daily Class Bin Volumes											Total Volume				
Bin #	1	2	3	4	5	6	7	8	9	10	11	12	13	14	1	2	3	4	5	6	7	8	9	10	11		12	13	14	
Bin Class	Cycles	Cars + Trailer	2 Axle Long	Bus	2 Axle 6-Tire	3 Axle Single	4 Axle Single	4 Axle Double	5 Axle Double	>6 Axle Double	<6 Axle Multi	6 Axle Multi	>6 Axle Multi	Unclassified	Cycles	Cars + Trailer	2 Axle Long	Bus	2 Axle 6-Tire	3 Axle Single	4 Axle Single	4 Axle Double	5 Axle Double	>6 Axle Double	<6 Axle Multi	6 Axle Multi	>6 Axle Multi	Unclassified		
11/23/2020	0.0%	68.0%	16.0%	16.0%	0.0%	0.0%	0.0%	0.0%	0.0%	0.0%	0.0%	0.0%	0.0%	0.0%	0	17	4	4	0	0	0	0	0	0	0	0	0	0	0	25
11/24/2020	0.3%	67.2%	22.6%	1.8%	5.0%	0.3%	0.0%	0.2%	0.0%	0.0%	0.0%	0.0%	0.0%	2.7%	5	1185	398	31	89	5	0	4	0	0	0	0	0	0	47	1764
11/25/2020	0.3%	69.0%	23.0%	1.5%	4.3%	0.1%	0.0%	0.4%	0.1%	0.0%	0.0%	0.0%	0.0%	1.3%	6	1261	420	28	79	1	0	8	1	0	0	0	0	0	23	1827
11/26/2020	0.3%	68.1%	23.0%	1.8%	4.9%	0.2%	0.0%	0.3%	0.0%	0.0%	0.0%	0.0%	0.0%	1.5%	5	1204	407	31	86	3	0	5	0	0	0	0	0	0	27	1768
Total	0.3%	68.1%	22.8%	1.7%	4.7%	0.2%	0.0%	0.3%	0.0%	0.0%	0.0%	0.0%	0.0%	1.8%	16	3667	1229	94	254	9	0	17	1	0	0	0	0	97	5384	

Class Data Summary

Bin #	1	2	3	4	5	6	7	8	9	10	11	12	13	14	Total Volume
Bin Class	Cycles	Cars + Trailer	2 Axle Long	Bus	2 Axle 6-Tire	3 Axle Single	4 Axle Single	4 Axle Double	5 Axle Double	>6 Axle Double	<6 Axle Multi	6 Axle Multi	>6 Axle Multi	Unclassified	Total Volume
Survey Total	16	3667	1229	94	254	9	0	17	1	0	0	0	0	97	5384
% Total	0.3%	68.1%	22.8%	1.7%	4.7%	0.2%	0.0%	0.3%	0.0%	0.0%	0.0%	0.0%	0.0%	1.8%	100%
Accumulated %	0.3%	68.4%	91.2%	93.0%	97.7%	97.9%	97.9%	98.2%	98.2%	98.2%	98.2%	98.2%	98.2%	100.0%	
Inv. Accum. %	99.7%	31.6%	8.8%	7.0%	2.3%	2.1%	2.1%	1.8%	1.8%	1.8%	1.8%	1.8%	1.8%	0.0%	



Classification Descriptions

Bin #	Bin Description
1	Motorcycles
2	Passenger cars, including those with recreational trailers
3	2-axle pick-ups, vans, and RVs, including those with recreational trailers
4	Buses
5	2-axle, 6-tire single units
6	3-axle single units
7	4-axle single units
8	3-axle or 4-axle double unit
9	5-axle double unit
10	6-, 7-, or 8-axle double unit
11	5-axle multiple unit
12	6-axle multiple unit
13	7-or-more-axle multiple unit
14	Vehicles that could not be classified

Site notes: